

ProteinFind[®] Goat Anti-Mouse IgG(H+L), FITC Conjugate

Cat. No. HS211

Storage: at 2-8°C in dark for one year

Description

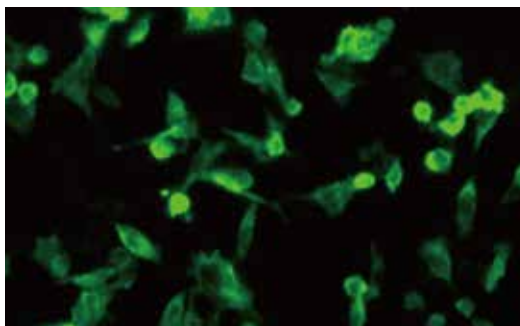
Affinity purified *ProteinFind*[®] Goat Anti-Mouse IgG(H+L) Antibody is conjugated with Fluorescein Isothiocyanate (FITC) dye under optimal conditions. FITC dye is a bright, yellow green-fluorescence dye with a maximal absorption wavelength at 490~495 nm and a maximal emission wavelength at 520~530 nm. This product has been optimized for use as a secondary antibody in immunofluorescence and flow cytometry.

Suggested Dilution

- IF: 1:100-500 dilution.
- FCM: 1:100-500 dilution.

Notes

- Aliquot prior to use, and avoid repeated freezing and thawing.
- Diluted antibody should be used within 12 hours.



Detection of fusion protein expression in HEK-293 cell by IF

For research use only, not for clinical diagnosis.

Service telephone +86-10-57815020

Service email complaints@transgen.com

