

ProteinFind[®] Anti-GAPDH Mouse Monoclonal Antibody

Cat. No. HC301

Storage: at 2-8°C for one month, at -20°C for one year

Description

GAPDH (glyceraldehyde-3-phosphate dehydrogenase) is a key enzyme for the glycolysis process. It is constitutively expressed at high levels in almost all tissues and commonly chosen as a loading control in Western Blot.

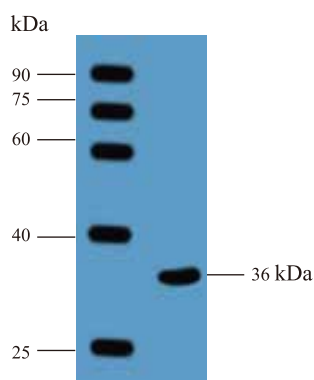
ProteinFind[®] Anti-GAPDH Mouse Monoclonal Antibody is a high-purity monoclonal antibody (isotype IgG1) raised in mouse against full length human GAPDH protein and can recognize GAPDH in human, rat, mouse, rabbit and other species.

Suggested Dilution

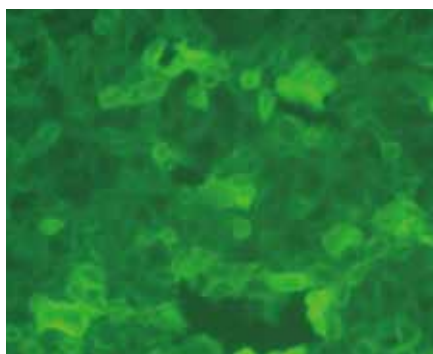
- Western Blot: 1:1000-10000 dilution.
- ELISA: 1:500-5000 dilution.
- IF: 1:100-500 dilution.
- IP: 1:100-500 dilution.

Notes

- Aliquot prior to use, and avoid repeated freezing and thawing.
- Diluted antibody should be used within 12 hours.



Detection of GAPDH protein (36 kDa)
by Western Blot (WB) using *ProteinFind*[®]
Anti-GAPDH Mouse Monoclonal Antibody.



Detection of GAPDH protein expression in HEK-293
cells by IF using *ProteinFind*[®] Anti-GAPDH Mouse
Monoclonal Antibody.

For research use only, not for clinical diagnosis.

Service telephone +86-10-57815020

Service email complaints@transgen.com

