

ProteinFind® Anti-CD34 Mouse Monoclonal Antibody

Please read the manual carefully before use.

Cat. No. HS901

Version No. Version 2.0

Storage: PBS (pH7.4), 0.05% ProClin 300, 50% Glycerol; at -20°C for two years, avoid repeated freeze-thawing.

Description

CD34 is a highly glycosylated transmembrane type I protein, which plays an important role in cell adhesion^[1]. CD34 is selectively expressed on the surface of hematopoietic progenitor cells, vascular endothelial cells, and some fibroblasts^[2], and abnormally expressed in many types of tumors and is associated with the development of leukemia. CD34 antibodies are widely used to identify and isolate hemopoietic progenitors and to classify acute and chronic leukemias^[3]. This product is anti-CD34 mouse monoclonal antibody, and can be used for specific detection of human CD34 protein by WB, IP, IF or FC.

Species Reactivity: Human (Species reactivity determined by WB experiment).

Clone Number: Trans-10C6

Antibody Subtype: Mouse IgG1

Immunogen

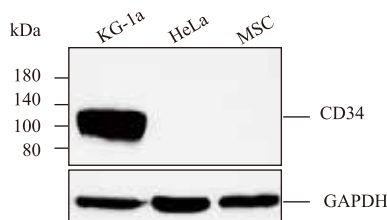
- Recombinant human CD34 extracellular domain
- Entrez Gene ID: 947
- UniProt ID: P28906

Applicable Experiments and Dilution

- WB: recommended dilution 1:1000.
- IP: recommended dilution 1:100.
- IF: recommended dilution 1:100.
- FC: recommended dilution 1:100.

Positive Control Cell Line: KG-1a cells

★ **Advanced Validation:** The antibody was validated by the relative expression of protein levels in different cell lines.

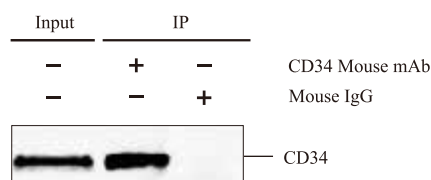


WB: ProteinFind® Anti-CD34 Mouse Monoclonal Antibody was used to detect the expression of CD34 in KG-1a cells (positive cells), HeLa cells (negative cells) and MSCs (negative cells).

Dilution ratio of primary antibody: 1:1000

Predicted molecular weight: 40.7 kDa

Actual molecular weight: 120 kDa

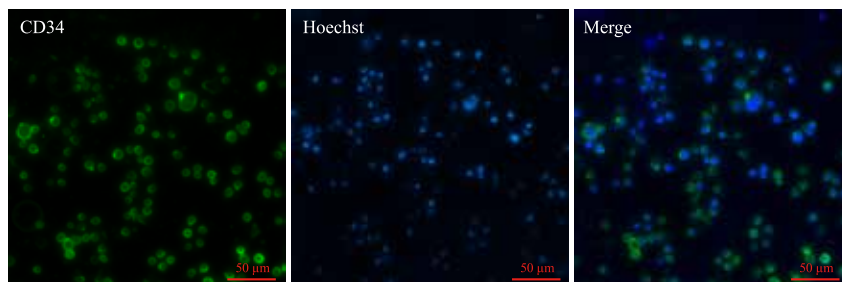


IP: Anti-CD34 Antibody (HS901) Immunoprecipitating CD34 in KG-1a whole cell lysate.

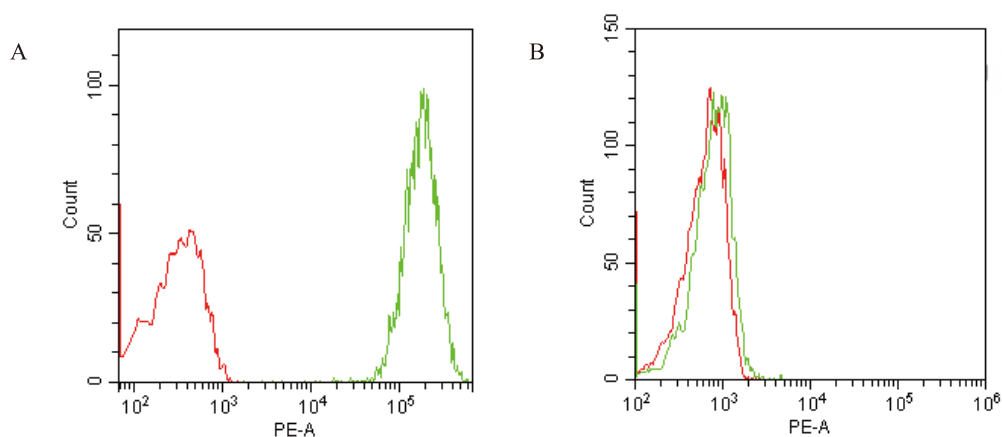
Lane 1 (input): 10% KG-1a whole cell lysate; lane2 (+): HS901 & KG-1a whole cell lysate;

Lane3: mouse monoclonal IgG instead of HS901 in KG-1a whole cell lysate.





IF: *ProteinFind*[®] Anti-CD34 Mouse Monoclonal Antibody (green) for detection of CD34 localization in KG-1a cells.
Hoechst is used to label the nucleus (blue).
Dilution ratio of primary antibody: 1:100



FC: *ProteinFind*[®] Anti-CD34 Mouse Monoclonal Antibody (green) for FC detection on KG-1a cells (picture A, positive cells) and HeLa cells (picture B, negative cells).
Negative control is Mouse IgG1 Isotype Control (red).
Dilution ratio of primary antibody: 1:100

References

- [1] Felschow DM, Mcveigh ML, Hoehn GT, et al. The adapter protein CrkL associates with CD34 [J]. *Blood*. 2001, 97(12): 3768-75.
- [2] Sidney LE, Branch MJ, Dunphy SE, et al. Concise review: evidence for CD34 as a common marker for diverse progenitors [J]. *Stem Cells*. 2014, 32(6): 1380-9.
- [3] Jiang Z, Wu D, Lin S, et al. CD34 and CD38 are prognostic biomarkers for acute B lymphoblastic leukemia [J]. *Biomark Res*. 2016, 4: 23.

For research use only, not for clinical diagnosis.

Version number: V2.0-202306

Service telephone +86-10-57815020

Service email complaints@transgen.com

